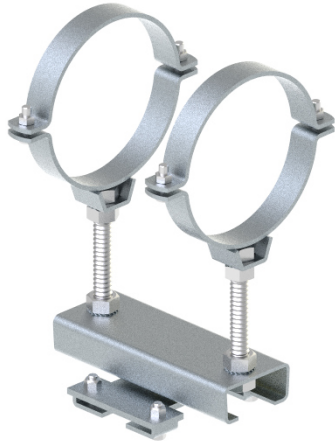


RESTRAINING ROLLER BEARING

for beam connections to HEA/HEB-beams

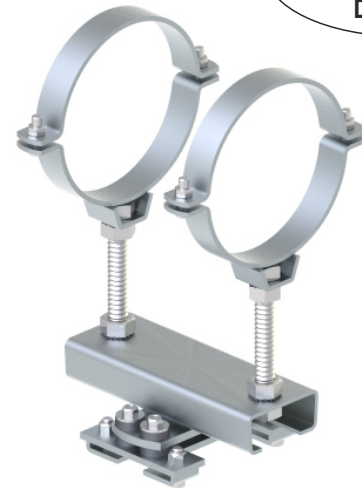
Type **118-305P Z-I**
118-305P ZA-I

Type 118 305P Z-I

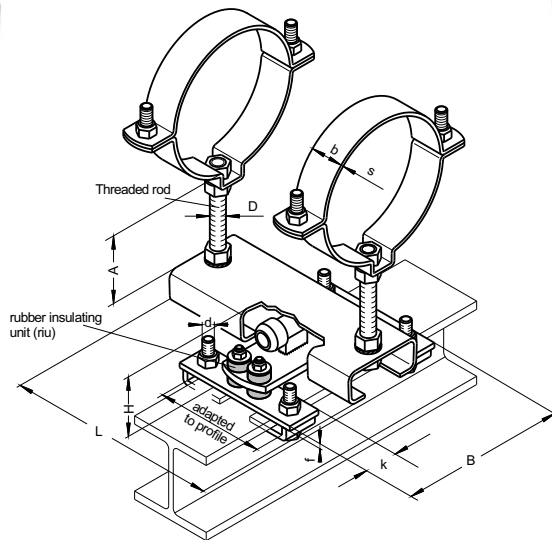


Type 118 305P ZA-I
with sound insulation

SOUND INSULATED
according to
DIN 4109



Also **STAINLESS** available
RUST PROOF



All dimensions in mm

| valid for both designs | | | | | | | | | | | 118 305P Z-I hot-dip galvanized | 118 305P ZA-I hot-dip galvanized | |
|------------------------|--|--------|---------------|-----|-----|-----|----|---|-----|--|------------------------------------|-------------------------------------|--------------|
| Size | Pipe ø | b x s | A Standard | L | D | d | k | f | B | for beam | H | H | riu Piece |
| 2 | 108.0 114.3 133.0 139.7 159.0 168.3 | 40x4,0 | 120 | 250 | M16 | M12 | 40 | 6 | 162 | HEA/HEB 100 - 160 or IPE off 140 - 330 | 56 | 72 | 4 |
| 3 | 193.7 219.1 244.5 267.0 273.0 298.5 | 50x8,0 | 180 | 300 | M24 | M12 | 50 | 8 | 210 | please tell us the beam size | 66 | 86 | 4 |

Other diameters on request. Please tell us the requested pipe diameter and the size of the beam.



Ordering designations: Type...
e.g. 118-305P Z-I

Diameters...
ø219.1

A-dimension
A=180

Surface
hot-dip galvanized

Beam
HEB 100