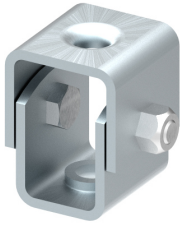
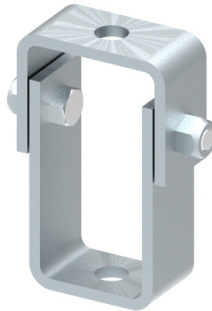
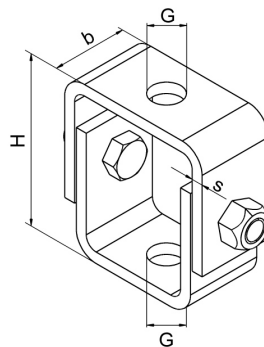
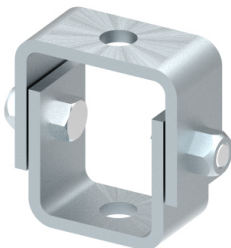


Type 508
Size 0

Type 508 L

Mounting example
e.g. as pendulum fasteningType 508
Size 1 to size 3e.g. Suspensions to
slope ceilings

All dimensions in mm

Size	G	b x s	Type 508			Type 508 L			F _{permissible} [KN]
			Item number	Design	H	Item number	Design	H	
0	M 8	30 x 2.5	34028171 34028173	zinc-coated stainless steel	40	34028210 34028211	zinc-coated stainless steel	60	1
1	for M 12	40 x 4	34006810 34022307	zinc-coated stainless steel	90	34023435 34022308	zinc-coated stainless steel	135	5
2	for M 16	40 x 6	34021706 34021790	zinc-coated stainless steel	90	34023436 34022309	zinc-coated stainless steel	135	12
3	for M 20	50 x 8	34010299 34023440	zinc-coated stainless steel	120	34017641 34017644	zinc-coated stainless steel	180	16

Description

The dipa® pendulum hanger Type 508 is a fastening element for linked coupling suspension by threaded rods for components of any kinds.

Specification

Material No. 1.0038. Surface: zinc-coated or stainless steel material No. 1.4571

Combination possibilities with Type

114, 170, 175, 3567 A

Preferable fields of application

Slope ceilings, bridge drainage

**Also STAINLESS available
RUST
PROOF**



Ordering designations: Type...
e.g. 508

Size...
0

H-dimension...
H= 40

Surface...
zinc-coated

Item number
34028171