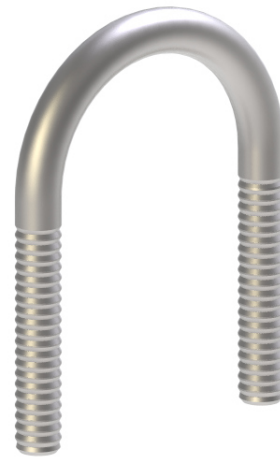
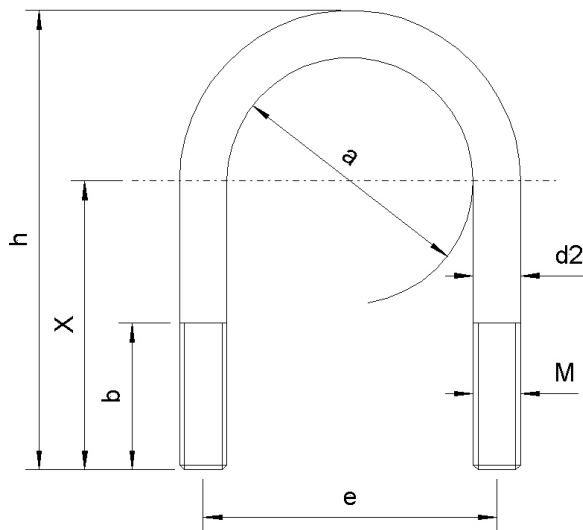


Round steel bracket / bow**Type 3570 A**

according to DIN 3570 Form A



All dimensions in mm

| Round steel bracket / bow according to 3570 A | | | | | | | | | | |
|-----------------------------------------------------------------------------|--------|-----|----|----|-----|------|-------|--------------|----------------|-------|
| Standard materials S235JR, X5CrNi18-10 (1.4301), X6CrNiMoTi17-12-2 (1.4571) | | | | | | | | | | |
| NW | a | M | b | e | h | X | d2 | for pipe | kg/piece | |
| 15 | 1/2" | 23 | 30 | 33 | 60 | 38,5 | 8,95 | 20 to 21,3 | 0,064 | |
| 20 | 3/4" | 30 | 40 | 40 | 70 | 45 | | 25 to 26,9 | 0,076 | |
| 25 | 1" | 38 | | 48 | 76 | 47 | | 30 to 33,7 | 0,084 | |
| 32 | 1 1/4" | 46 | | 56 | 86 | 53 | | 38 to 42,4 | 0,096 | |
| 40 | 1 1/2" | 52 | | 62 | 92 | 56 | | 44,5 to 48,3 | 0,104 | |
| 50 | 2" | 64 | 12 | 50 | 76 | 109 | 10,76 | 57 to 60,3 | 0,178 | |
| 65 | 2 1/2" | 82 | | | 94 | 125 | | 72 | 76,1 | 0,208 |
| 80 | 3" | 94 | | | 106 | 138 | | 79 | 88,9 | 0,232 |
| 100 | 4" | 120 | 16 | 60 | 136 | 171 | 14,60 | 108 to 114,3 | 0,531 | |
| 125 | 5" | 148 | | | 164 | 191 | | 101 | 133 to 139,7 | 0,605 |
| 150 | 6" | 176 | | | 192 | 217 | | 113 | 159 to 168,3 | 0,694 |
| 175 | 7" | 202 | | | 218 | 249 | | 132 | (191) to 193,7 | 0,798 |
| 200 | 8" | 228 | 20 | 70 | 248 | 283 | 18,25 | 216 to 219,1 | 1,413 | |
| 250 | 10" | 282 | | | 302 | 334 | | 173 | 267 to 273 | 1,686 |
| 300 | 12" | 332 | | | 352 | 385 | | 199 | 318 to 323,9 | 1,953 |
| 350 | 14" | 378 | 24 | 70 | 402 | 435 | 22,00 | 355,6 to 368 | 3,167 | |
| 400 | 16" | 428 | | | 452 | 487 | | 249 | 406,4 to 419 | 3,556 |
| 500 | 20" | 530 | | | 554 | 589 | | 300 | 508 to 521 | 4,327 |

Description

Roundsteel bracket / bow made of steel according to DIN 3570

Specification

Material No. 1.0038 galvanized or hot-dip galvanized.

Also deliverable in ordinary steel or stainless steel material No. 1.4301 and 1.4571.

Packing unit

50 pieces per diameter

Other diameter on request

Also STAINLESS available
RUST
PROOF