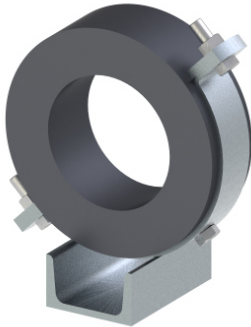
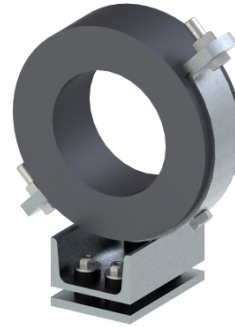
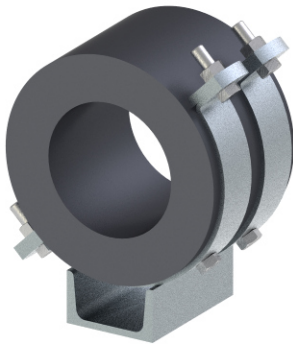
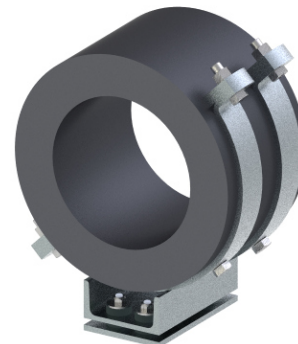


Type 171-1
 one piece

Type 171-1A
 one pieces
 with sound insulation

Type 171-2
 two pieces

Type 171-2 A
 two pieces
 with sound insulation


Description

The low temperature glide support Type 171-1 and 171-2 are provided as gliding or glide support pipe clamps for temperature stressed pipelines with a diameter between **21,3 mm and 813,0 mm**.

The low temperature pipe clamps Type 170 are used as stress carrying clamps and are themselves integrated in a half clamp welded on an U-profile. The dipa® glide supports are available in four distinct versions and are compatible with the dipa® glide supports of Type 190 SA and of the series of 301 and 302. The demand for a mounting free of a low temperature bridge will be fulfilled completely by the dipa® low temperature glide support.

Because of the high density of the foam a reliable load transmission of the expanding pipe lines on the glides plane is guaranteed.

Admissible mass load per low temperature pipe clamp see load characteristic of Type 170, dynamic load. (Type 171-2)

Recommendation

We recommend our cartouche bonding agent No. 4045 to avoid a diffusion between the half clamp bodies when connecting them. (Item No 31004966, see catalogue page 174).

Preferable fields of application

Climate- und low temperature technology